



# Medway Valley Heritage Forest ESA (south) Conservation Master Plan – Phase 2 – Local Advisory Committee

July 27, 2017

- **MEETING #3:** *Public Engagement Results / Discussion*



**London**  
CANADA

<b>5:30 pm - 5:35 pm</b>	Welcome to Meeting 3 of the LAC
<b>5:35 pm – 5:45 pm</b>	Purpose of Meeting #3
<b>5:45 pm – 5:45 pm</b>	Review of Public Engagement To Date
<b>5:45 pm – 6:55 pm</b>	A - Discussion of Ecological Restoration B - Discussion on Connected Trails and Crossings C - Draft CMP discussion
<b>6:55 pm – 7:00* pm</b>	Next Steps and Wrap up* Meeting may go until 7:30pm





# Purpose of LAC Meeting #3

- Review of the input/analysis from Community Open House #1 and survey
- Summarize how information will be used in the CMP
- Discuss Ecological Restoration needs/plans
- Discuss Trail Guidelines, Trails and Connections



# Review of Public Engagement

- Community Open House held on June 1 with over **90** in attendance.
- A month long (June 1 to June 30) public engagement period started on June 1.
- Community members were encouraged to provide feedback on “Ideas, Issues, Opportunities, and Observations”.

## Sources of feedback:

- Online survey and mapping tool (Social PinPoint);
- Comment forms collected during Community Open House; and,
- Comments sent in by LAC members.

# Summary of Feedback Received

## Source of Feedback/Comment

### Comments submitted from LAC Members on behalf of:

- EEPAC
- Nature London
- Orchard Park/Sherwood Forest Ratepayers
- Huron University College
- Sherwood Forest Adopt-an-ESA

### Social PinPoint – Online Mapping

- 82 Pins/comments
  - 157 sub-comments across these 82 pins

### Community Open House Hard Copy Mapping

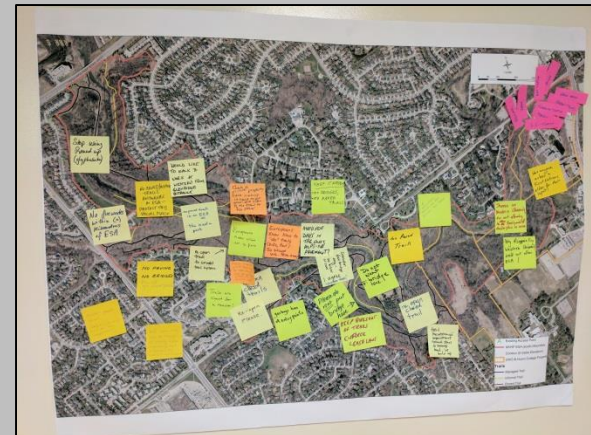
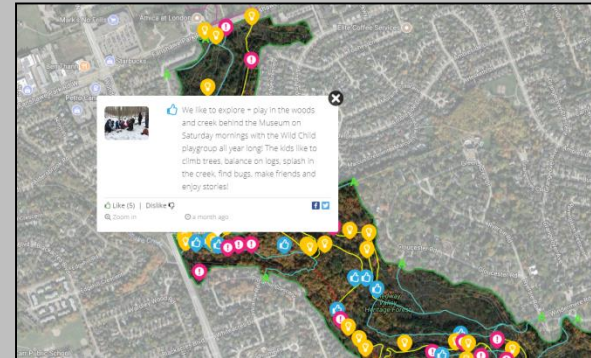
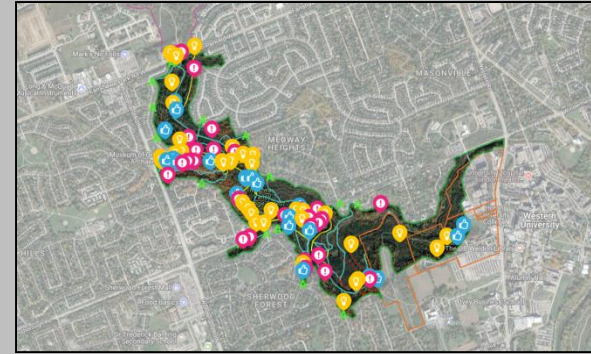
- 90% of sticky notes on map were aligned with other comments submitted
- 10% were unique comments not previously submitted

### Survey

- 105 online respondents; 12 hard copy submissions

### Community Open House Comments

- 29 Event Comment Forms submitted
  - 48% submitted comments; 52% only submitted feedback on open house content and information for contact list
  - 80% said they were provided enough information to understand the project; 17% responded somewhat and 1 respondent said they were not provided enough information.



# Survey Results

- Of the **117** respondents, the following affiliations were recorded:
  - General Public - 72
  - Environmental & Ecological Planning Advisory Committee (EEPAC) - 1
  - Accessibility Advisory Committee (AACAC) - 1
  - Upper Thames River Conservation Authority (UTRCA) - 6
  - MVHF ESA Adopt an ESA: Sunningdale West Ratepayer Association (RPA) - 1
  - MVHF ESA Adopt an ESA: Friends of Medway Creek - 4
  - MVHF Adopt an ESA: Sherwood Forest / Orchard Park RPA - 4
  - Sherwood Forest / Orchard Park RPA - 25
  - Sunningdale West RPA - 0
  - Old Masonville Ratepayers - 2
  - Sunningdale North Residents Association - 1
  - Attawandaron Residents - 0
  - Western University - 2
  - Huron University College - 4
  - Nature London - 17
  - Thames Valley Trail Association - 12
  - Heritage London Foundation - 1
  - Museum of Ontario Archaeology – 5

Please note, some respondents checked off multiple groups resulting in more than 117 results for group affiliations.

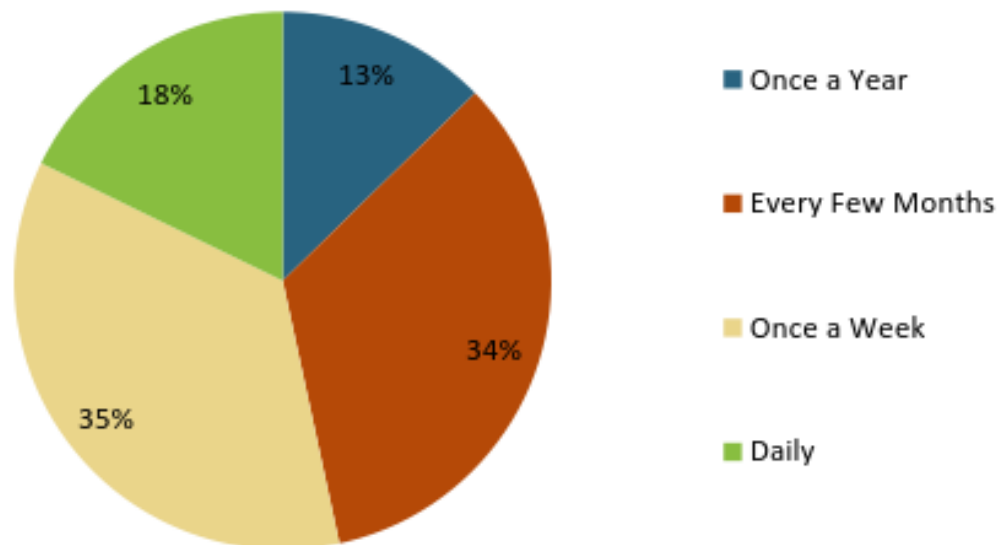
# Survey Results

- Question 1: Have you ever been to the Medway Valley Heritage Forest (MVHF) Environmentally Significant Area (ESA) south of Fanshawe Park Road West?

*All **117** respondents said YES.*

- This question was followed by an inquiry into the frequency of visits to the ESA.

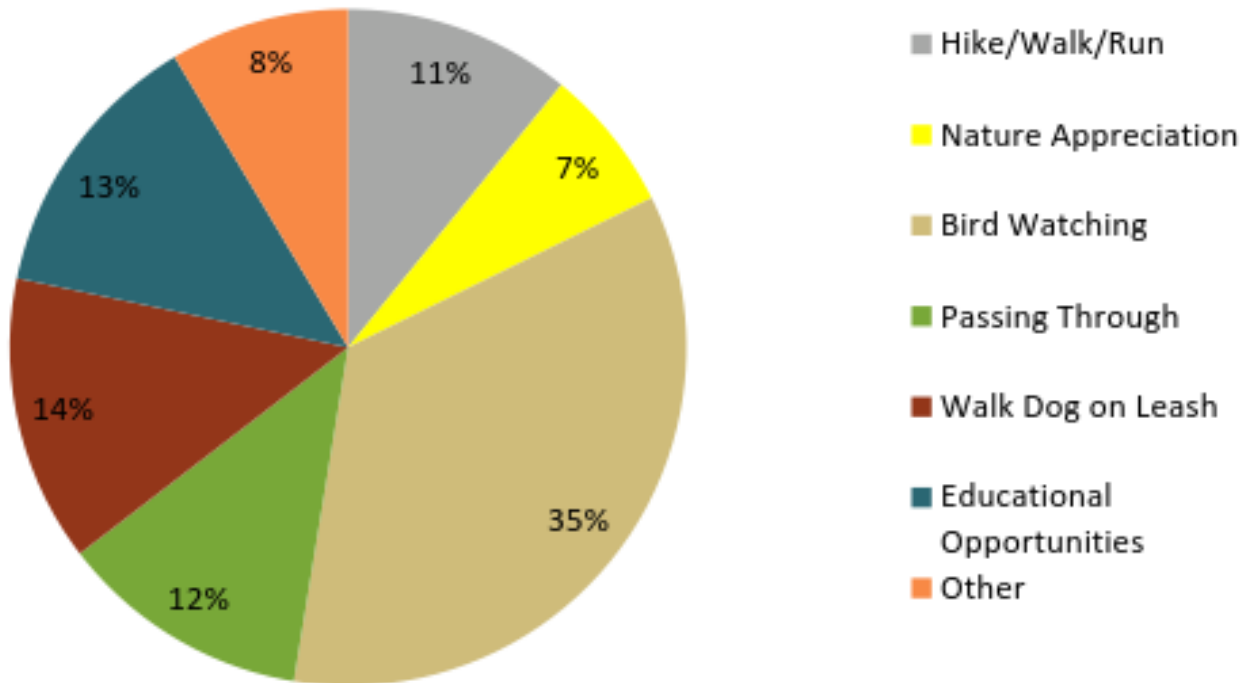
**Frequency of Visits to the MVHF ESA**



# Survey Results

- Question 2: What do you like to do in the MVHF ESA (south)?

## What do you like to do in the MVHF ESA (south)?

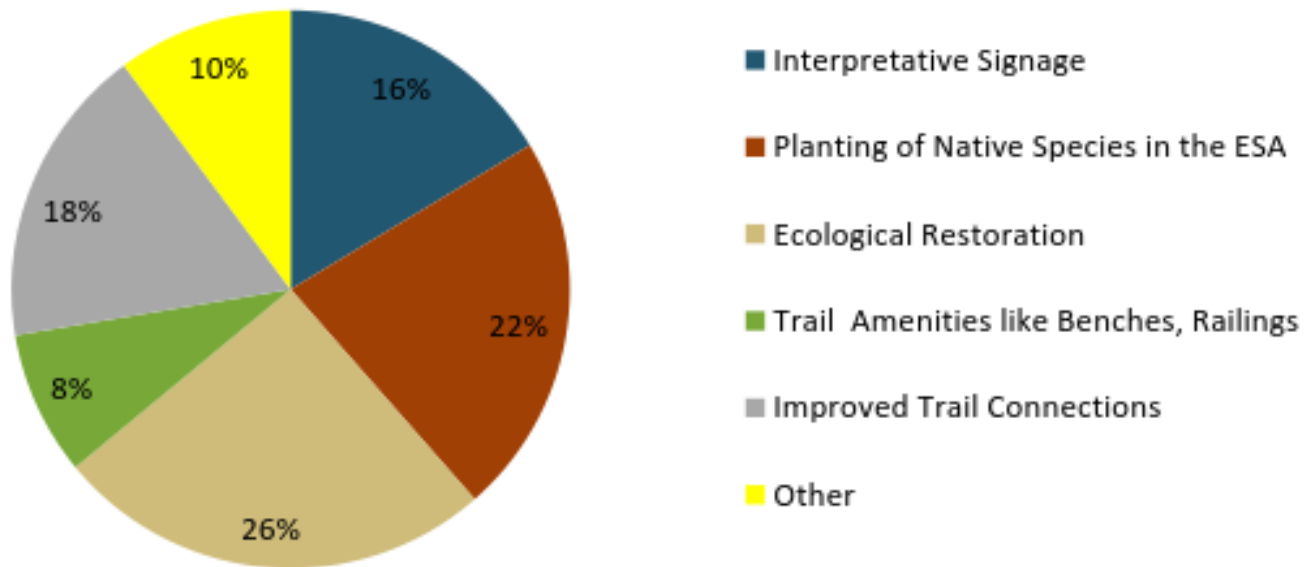




# Survey Results

- Question 3: What do you think could be improved in the MVHF ESA (south)?

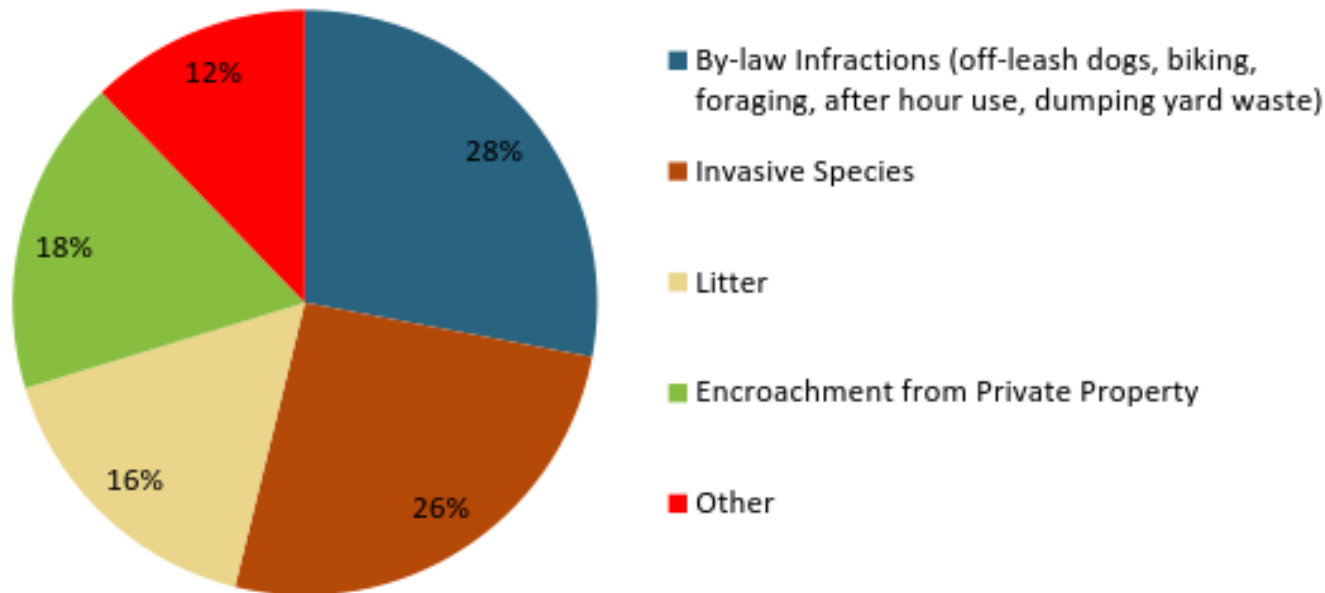
## What do you think could be improved in the MVHF ESA (south)?



# Survey Results

- Question 4: What do you consider to be the biggest threat to the ESA?

## What do you consider to be the biggest "Threat" to the ESA?



# What We Heard From Public Engagement

Written feedback from during the public engagement was generally similar to what has been provided by the LAC:

- **The ESA is a unique feature; protecting and restoring/maintaining ecological integrity is the first priority**
- There is a desire for **more learning/education** opportunities within the ESA
- Management of the ESA to include **invasive species removal**
- Requests for **more enforcement** of by-laws (e.g. off-leash dogs, bicycles, encroachment)
- **Improvements of trails** in sections is an area of importance.
  - Some muddy, icy and wet areas are present along the trail system; requests for boardwalks or other solutions
- **Monitoring** in the ESA is important

# What We Heard From Public Engagement

- There is a **desire for connectivity/continuity of trails** throughout the ESA (i.e. better linkages, bridges, easements through private property, etc.)
- **Opposition to the closing of other “existing” trails**, including a mix of managed and informal
- There is a desire for **some closed trails** (i.e. Gainsborough Ravine to Snake Creek Valley) **to be re-opened**.
- There is **opposition to paving** of trails but some asked for multi-use paths



# From what we heard to CMP

## How we will use the information collected:

- Comments are to be incorporated into CMP, where applicable
  - It will be important to clearly connect the information in the Guidelines with the information presented in the CMP to inform how decisions are made.
  - Following issue of the draft CMP for review, a FAQ will be created to respond to comments and identify where comments were considered in the draft CMP
  - Comments not applicable to CMP will be provided to appropriate City staff

# Ecological Restoration

- **Previous Work** - Majority of restoration work underway in 8 of 15 Restoration Overlays (RO) on Phase 1 CMP Figure 17
- High Priority RO 5, 14 & 15 to protect SAR implemented in 2013-2017
- City / Dillon & UTRCA recognized for innovative work, SAR habitat protection and contributions to the [Federal Recovery Strategy for the False Rue-anemone \(\*Enemion biternatum\*\) in Canada](#)
- Phragmites high priority in all ESAs incl. Medway. Control since 2013 (RO 1 & 2)
- **Current Work** to manage Periwinkle, Goutweed, Buckthorn, Norway Maple, Phragmites, Loosestrife, and, native tree / shrub plantings and 74 ash tree EAB injections continues (RO 10, 11 & 13)
- Garlic Mustard pulled by SF Adopt an ESA
- **Future Work** – implement RO3, 4, 6, 7, 8, 9 & 12 to manage Buckthorn, Snowdrops, Woodland Sedge, plant trees & continue monitoring/touch ups



# From what we heard to CMP

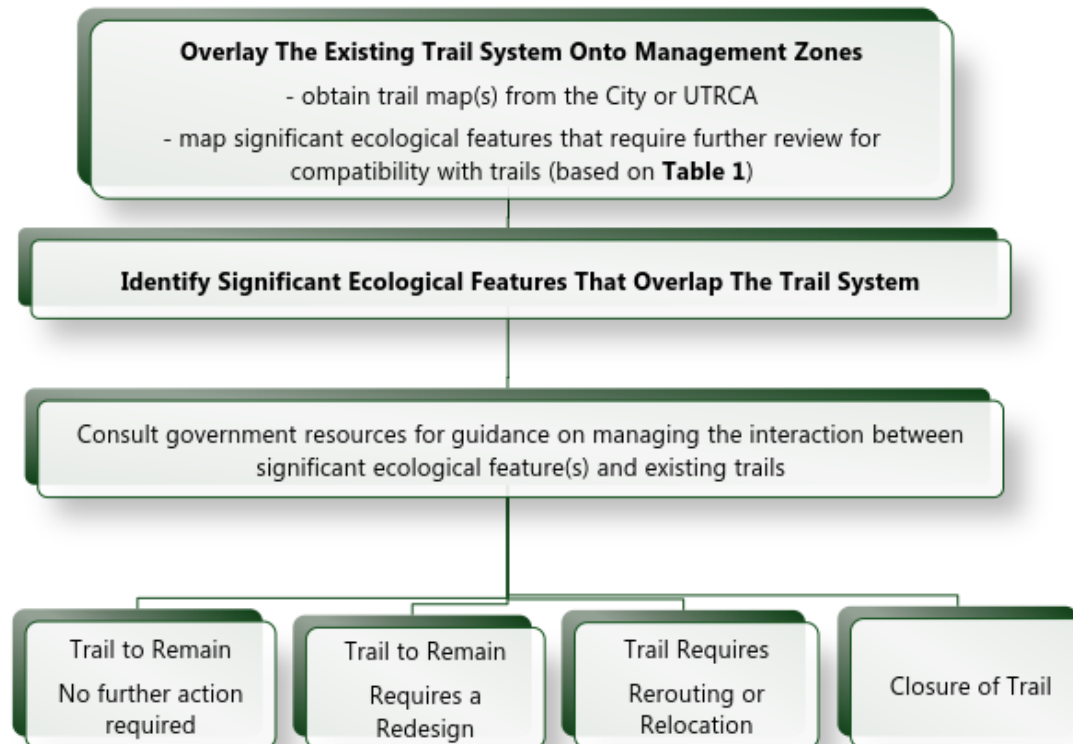
## Discussion:

- How Council approved Guidelines for Management Zones and Trails in ESAs are used for:
  - Reviewing trails
    - New
    - Closing / Opening
  - Reviewing connections suggested by the public
    - Is the connection permitted by the Guidelines?
    - If yes, what do we need to consider? This may include items beyond the Guidelines.

# Reviewing Trails

- Managed trails will be reviewed on a trail-by-trail basis
- In general, significant ecological features in the ESA were determined to be compatible with trails as per Addendum to Phase I

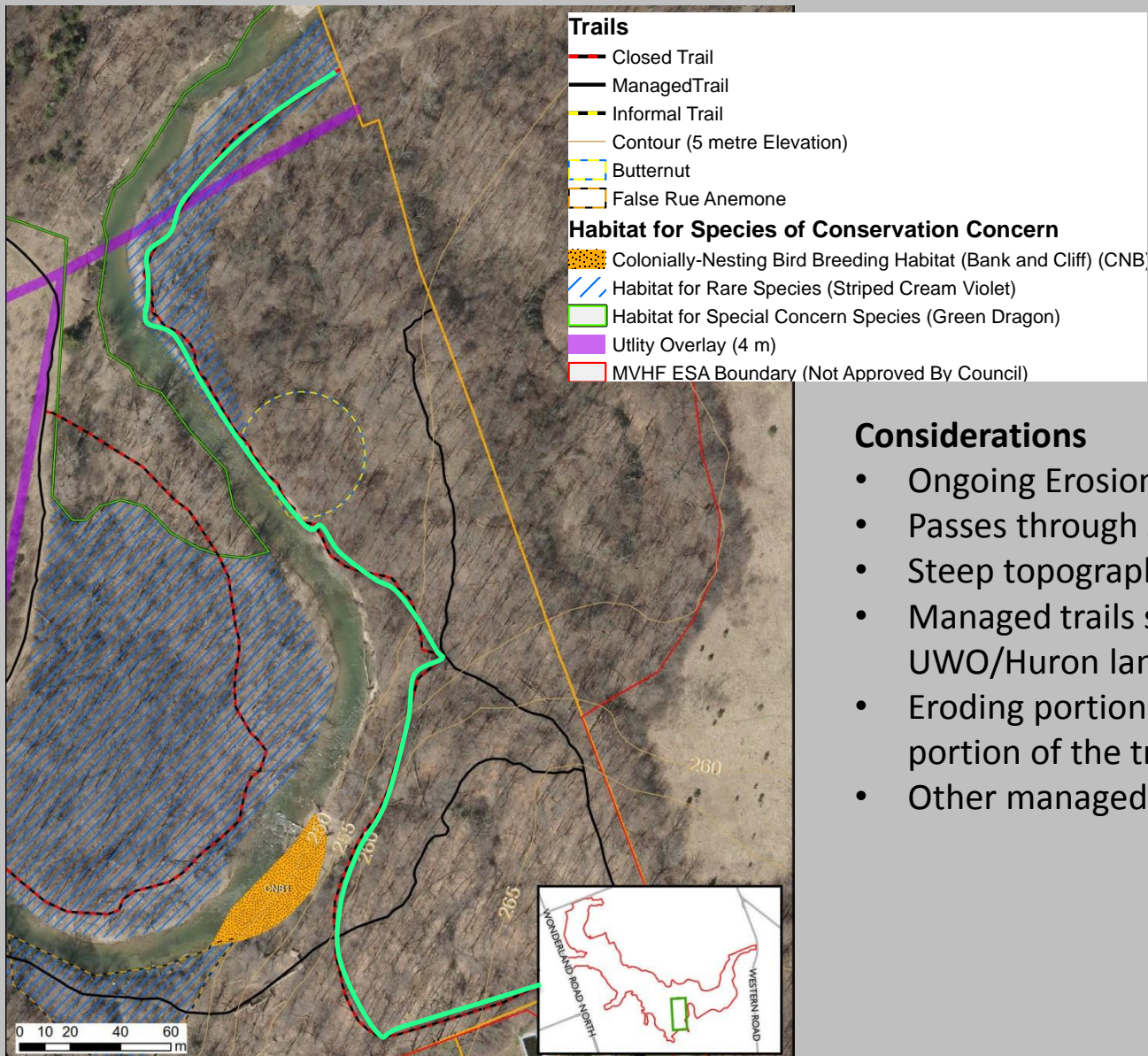
**Chart 2: Review of Significant Ecological Features and Trail Recommendation for Existing Trails**





# Reopening Closed Trails

## (Connecting Ramsay Road Access to Huron Lands)



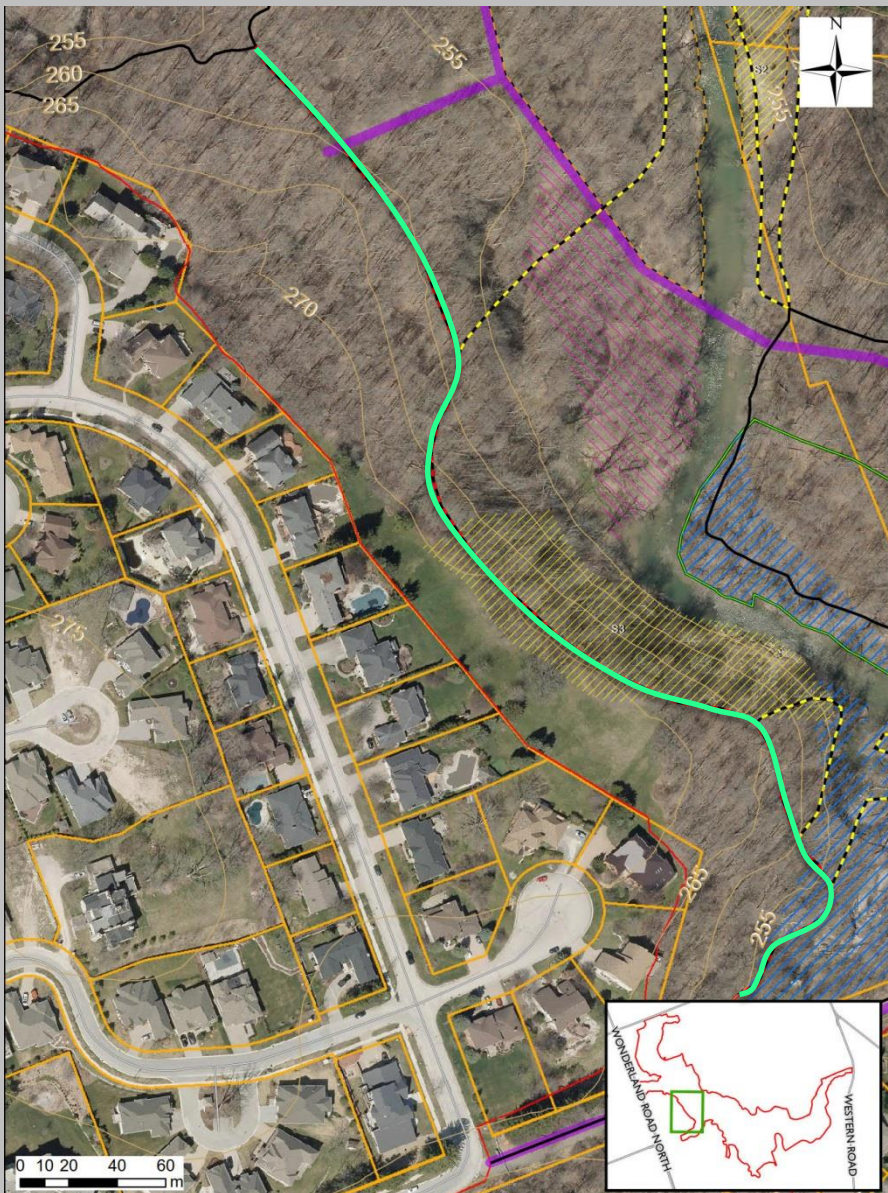
### Considerations

- Ongoing Erosion along creek edge
- Passes through SCC habitat
- Steep topography
- Managed trails still provide a connection to UWO/Huron lands
- Eroding portion would require relocation of a portion of the trail
- Other managed trails in same area



# Reopening Closed Trails

(Gainsborough Ravine to Snake Creek Valley)



## Considerations

- Ongoing Erosion
- Seepage area
- Topography
- Encroachment of adjacent landowners into ESA
- Trail requires rerouting/relocation to avoid slope and seepage area
- Trail rerouting/relocation can coincide with naturalization identified for area at top of slope

## Trails

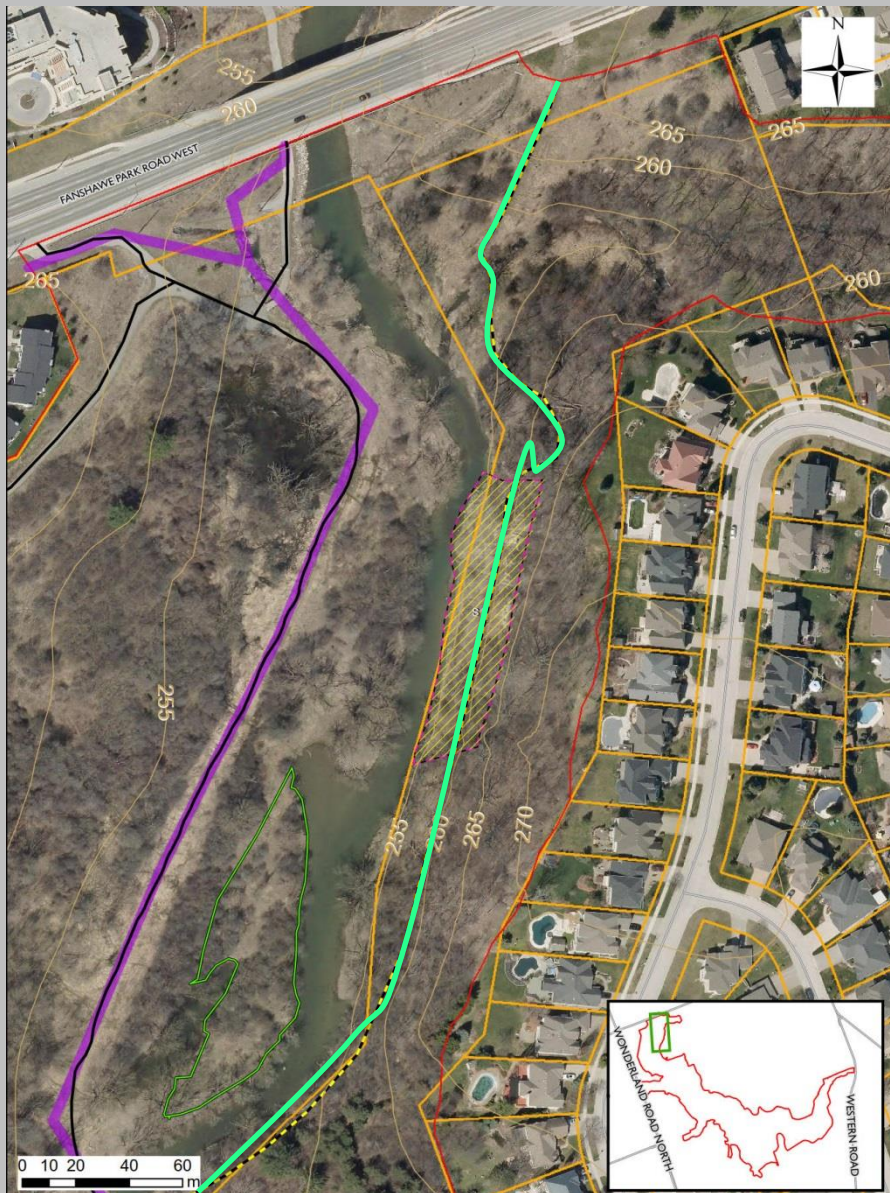
- Closed Trail
- Managed Trail
- Informal Trail
- Contour (5 metre Elevation)
- False Rue Anemone

## Habitat for Species of Conservation Concern

- Seeps and Springs Area (S1-S7)
- Habitat for Rare Species (Striped Cream Violet)
- Habitat for Rare Species (American Gromwell)
- Habitat for Special Concern Species (Green Dragon)
- Utility Overlay (4 m)
- MVHF ESA Boundary (Not Approved By Council)



# Enforcing Closed Trail/Informal Trail



## Considerations

- Former managed trail that was closed
- Has continued to be used informally
- Passes through seep area and SCC habitat
- Would a connection over creek result in discontinued use?

## Trails

- Closed Trail
- Managed Trail
- Informal Trail
- Contour (5 metre Elevation)

## Habitat for Species of Conservation Concern

- Seeps and Springs Area (S1-S7)
- Habitat for Rare Species (Shrubby St. John's Wort)
- Habitat for Special Concern Species (Green Dragon)
- Utility Overlay (4 m)
- MVHF ESA Boundary (Not Approved By Council)

# Considerations for Crossings

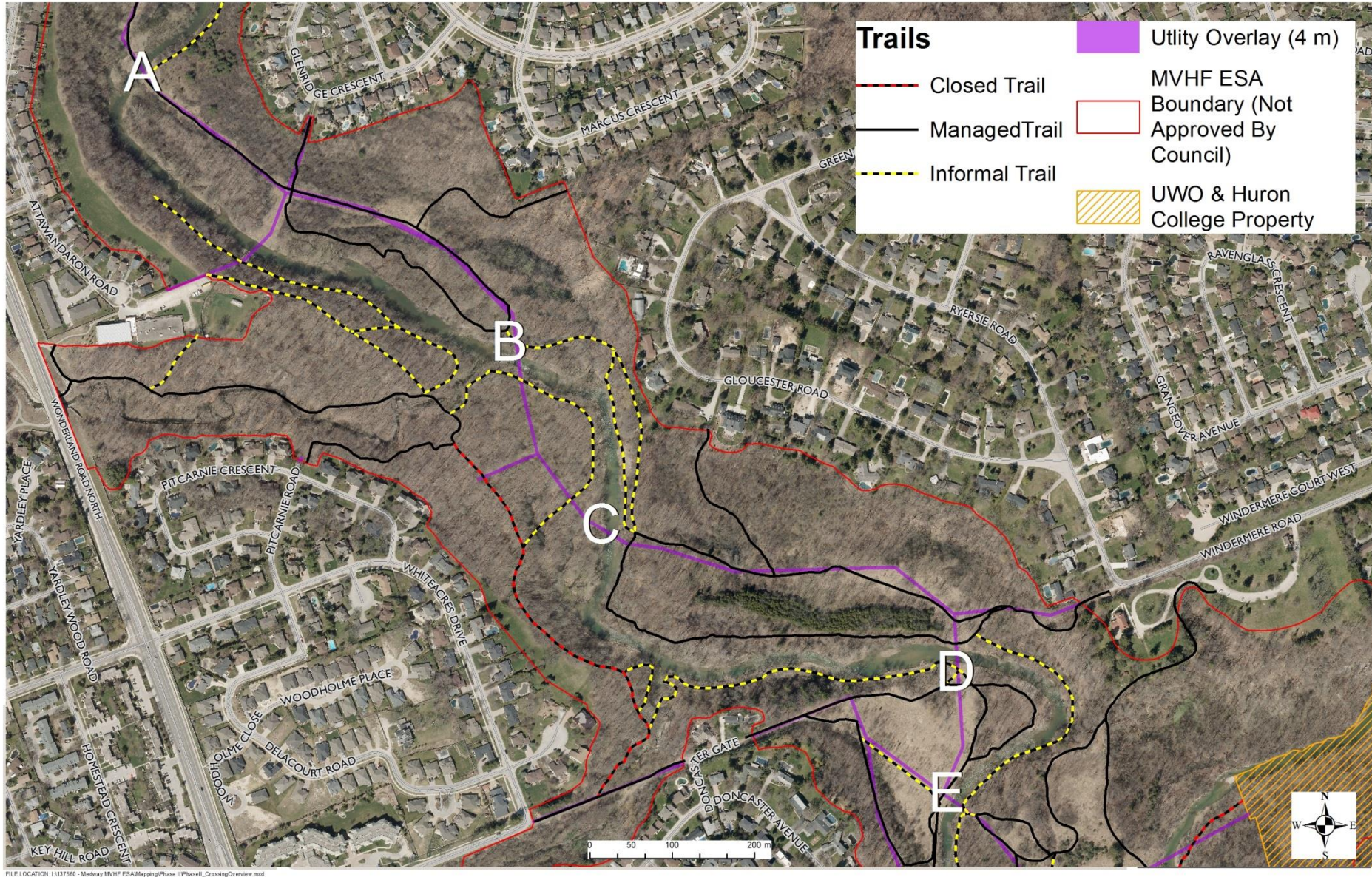
From Section 3.2 of Guidelines: Ecosystem Approach applied to Trail Planning

*Research on natural area trail impacts has demonstrated that a properly managed trail system will limit the areal extent and severity of recreation impacts by concentrating traffic on resistant trail surfaces and through the use of appropriate structures such as bridges, fences, and boardwalks (Leung & Marion 2000).*

Questions
Was the crossing suggested by the public?
Does the crossing comply with Guidelines?
Does the crossing connect managed trails?



# Was the crossing suggested by the public?



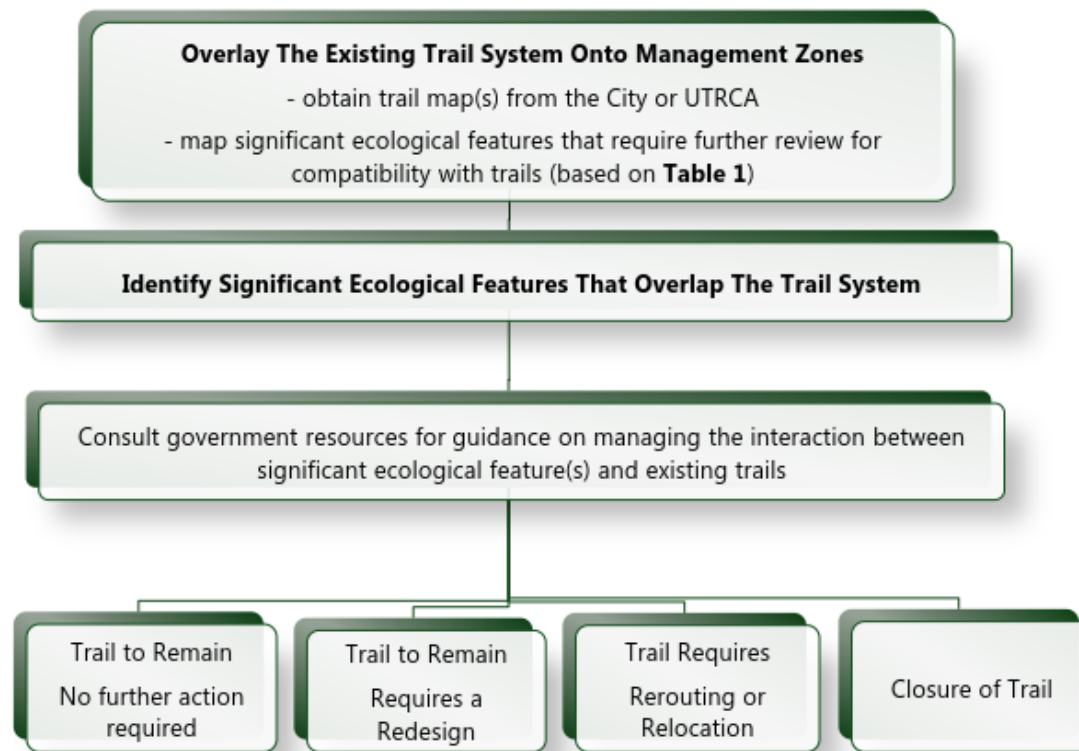
FILE LOCATION: I:\137560 - Medway MVHF ESAMapping\Phase II\PhaseII\_CrossingOverview.mxd



# Does the crossing comply with the Guidelines?

- Management Zones: mix of Nature Reserve and Natural Environment
  - Level 1 and 2 trails, trail structures permitted in both zones
- All significant ecological features determined to be compatible with trails as per Addendum to Phase I

**Chart 2: Review of Significant Ecological Features and Trail Recommendation for Existing Trails**



# Does the crossing comply with the Guidelines?

- Bridges treated as “new trails” and subject to Chart 3 of the Guidelines

**Chart 3: Review of Significant Ecological Features and Trail Recommendations for New Trails**

## **Map Significant Ecological Features Over Management Zone Map**

- only map significant ecological features that  
require further review for compatibility with trails (based on **Table 1**)

Consult government resources for guidance on assessing the interaction between significant ecological features and new trails

If trails are incompatible with significant  
ecological feature:  
Trail Not Permitted

If trails are compatible with significant ecological  
feature, proceed with trail planning according to  
sustainable design practices

# Does the crossing comply with the Guidelines?

Questions to consider from the Guidelines (see Section 7.2.1)

- Choosing a bridge location: Compatible vs. Incompatible
- Is the location subject to current impacts due to absence of a crossing?
  - Would a bridge minimize/eliminate those impacts? Include consideration for mitigating potential construction impacts.
  - Can the bridge be built in a manner that will protect the ecological features and functions of the ESA and be designed to blend in with the environment? Will it act as a landscape anchor to draw people away from shortcutting through significant or sensitive areas?
- Is there a significant ecological feature in the footprint of the bridge?
  - Species of Conservation Concern and at risk species should not be disturbed
- Does the bridge connect existing managed trails or would new trail sections also be required?
- Is the location located along a utility route (utility overlay) to minimize impacts?



# Bridge Near Metamora - Before



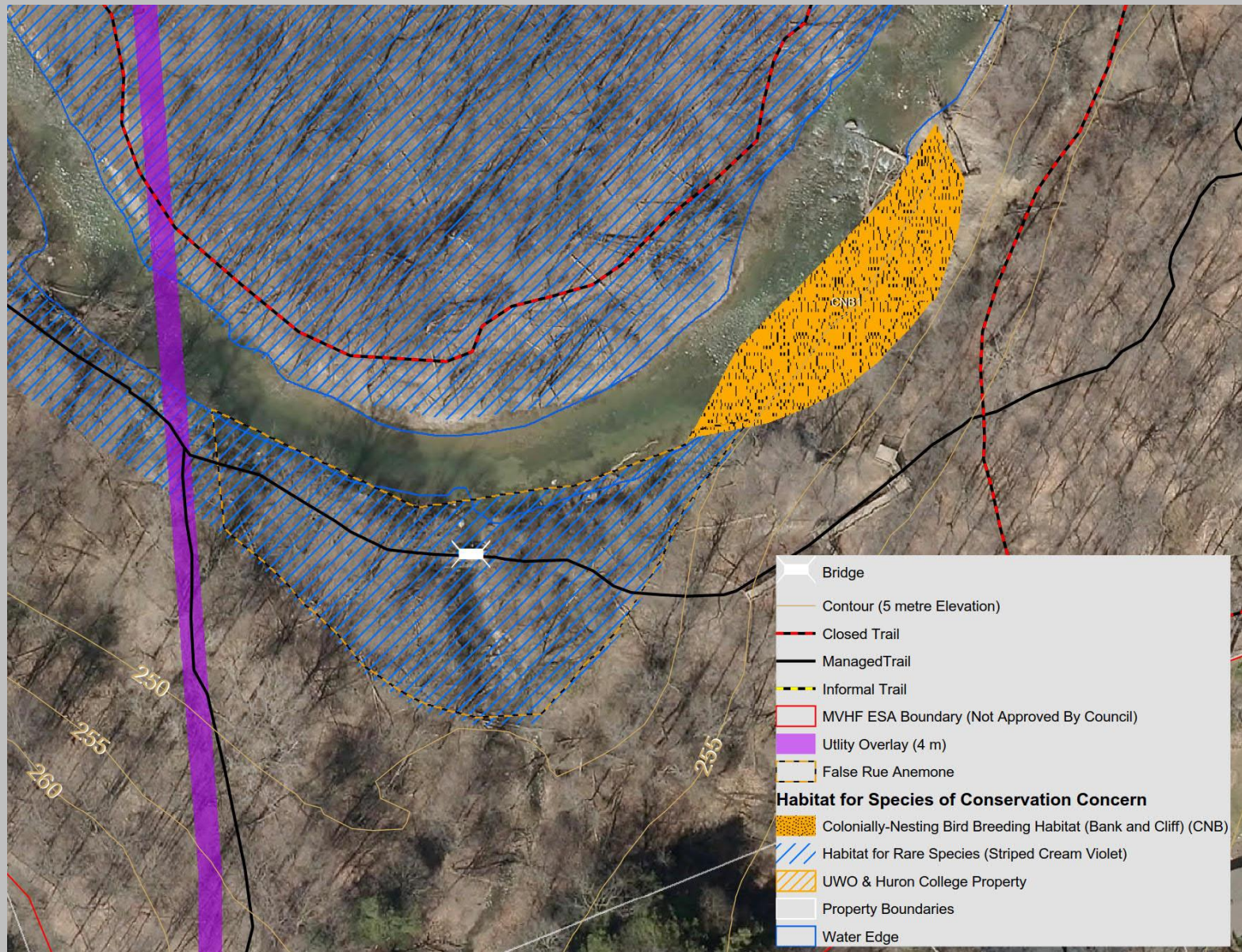


# Bridge Near Metamora - After





# Bridge near Metamora - Ecological Features



# Discussion

- Are there other considerations we should be aware of?

# Crossing(s) over the Medway

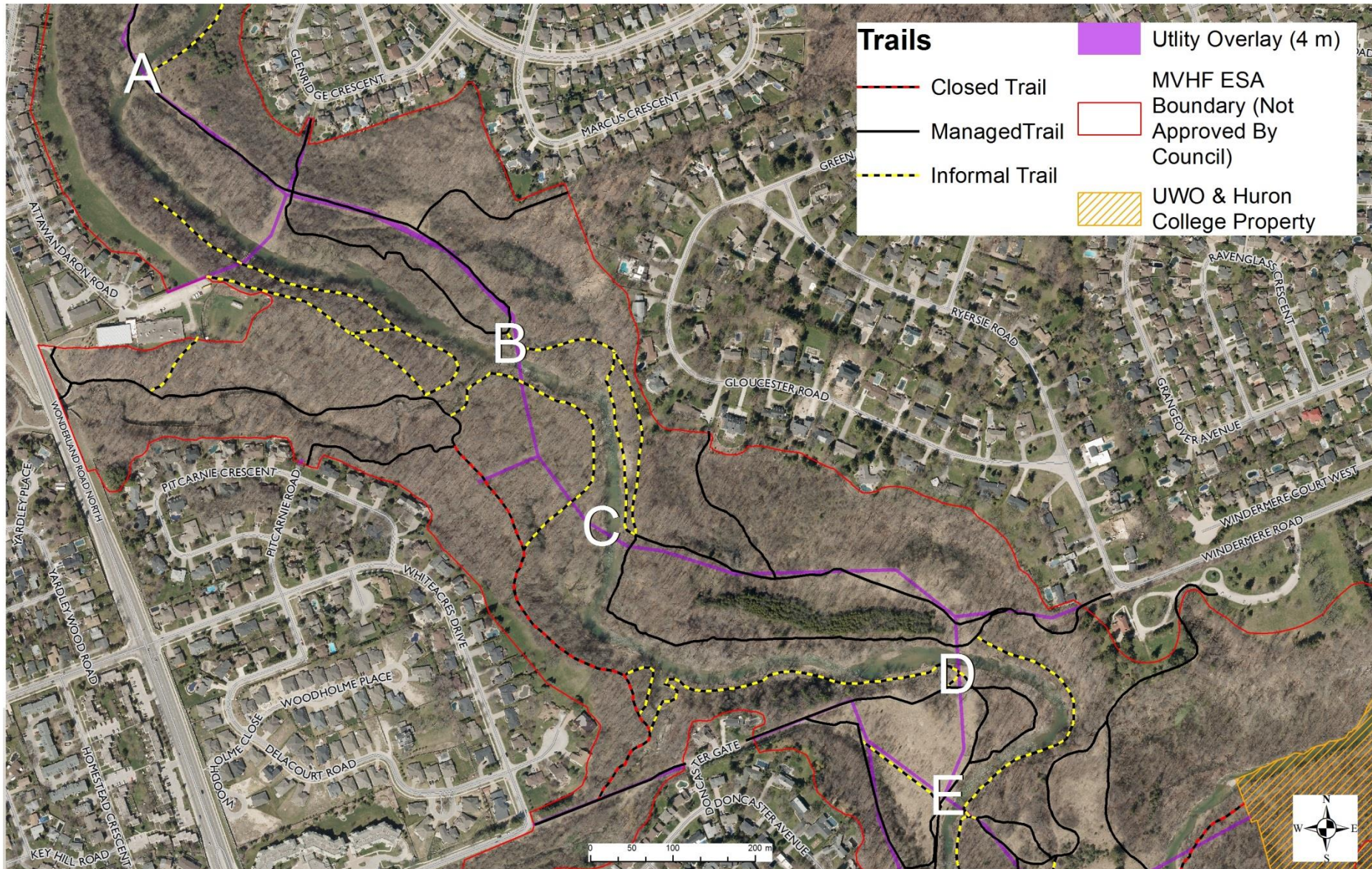
- Five locations for crossings over Medway Creek were suggested through consultation.
- Feedback for crossings is divided; Comments both for/against from LAC members and the general public. Divide within stakeholder groups as well.

## Comments on Crossings:

- Those in opposition generally see crossings as a threat to the ESA, in particular Species at Risk and their habitats, by leading to potential for increased use.
- Those in favour of crossings generally want to see connection of trails on the east and west sides of the creek.
- Feedback from public also indicates that there are informal crossings across the Medway during periods of low-water and in the winter.
- Feedback also indicates that without formal connections/crossings, the public will continue to use closed trails, informal trails and create their own crossings, potentially damaging the Creek.



# Suggested Crossings





# Potential Crossing A

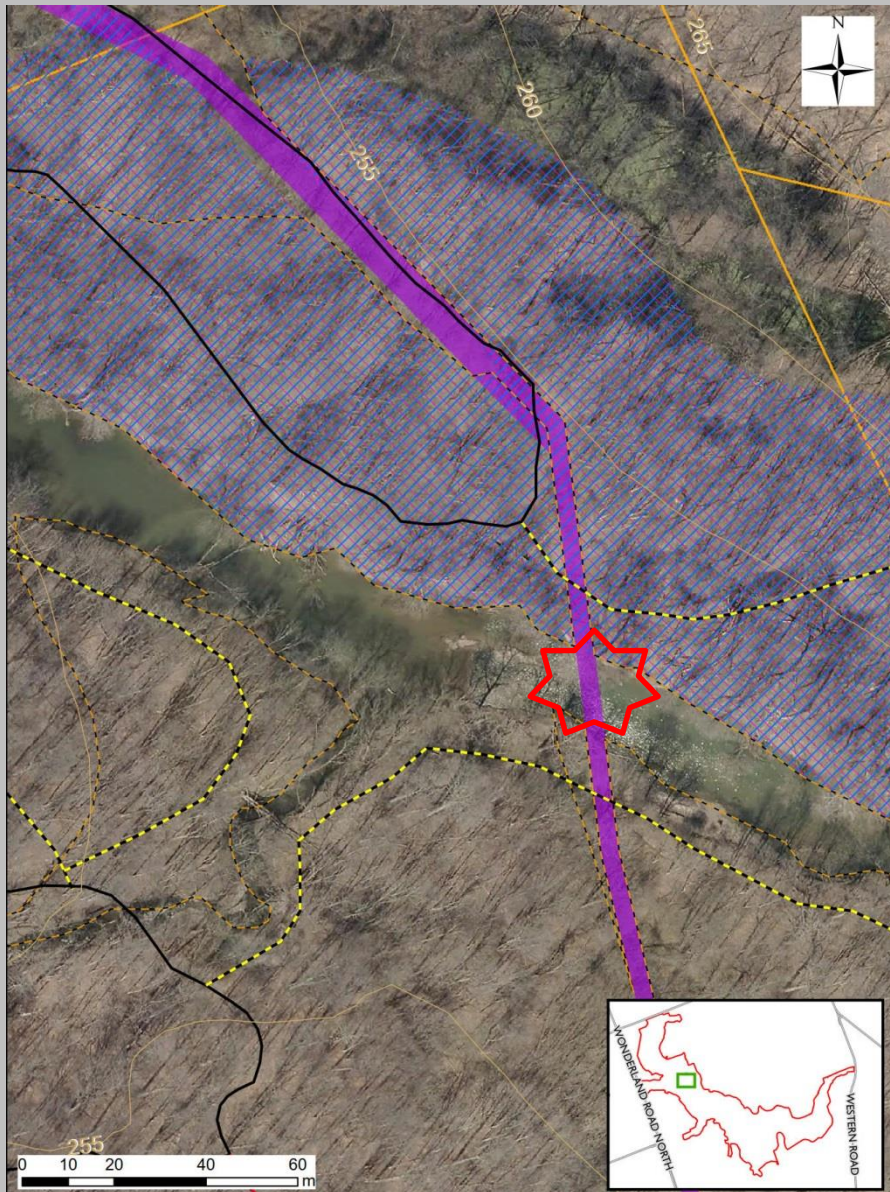


## Considerations

- Would connect two existing managed trails
- No connection may result in further use of the informal trail to the east (closed managed trail)
- Outside of mapped Significant Ecological Features
- Complies with Guidelines



# Potential Crossing B



## Considerations

- Would require converting informal trails to managed trails
- Would require passing through known SAR and SCC habitat
- Would not comply with Guidelines as would directly impact Species at Risk with bridge location along any point of creek bank in this location

## Trails

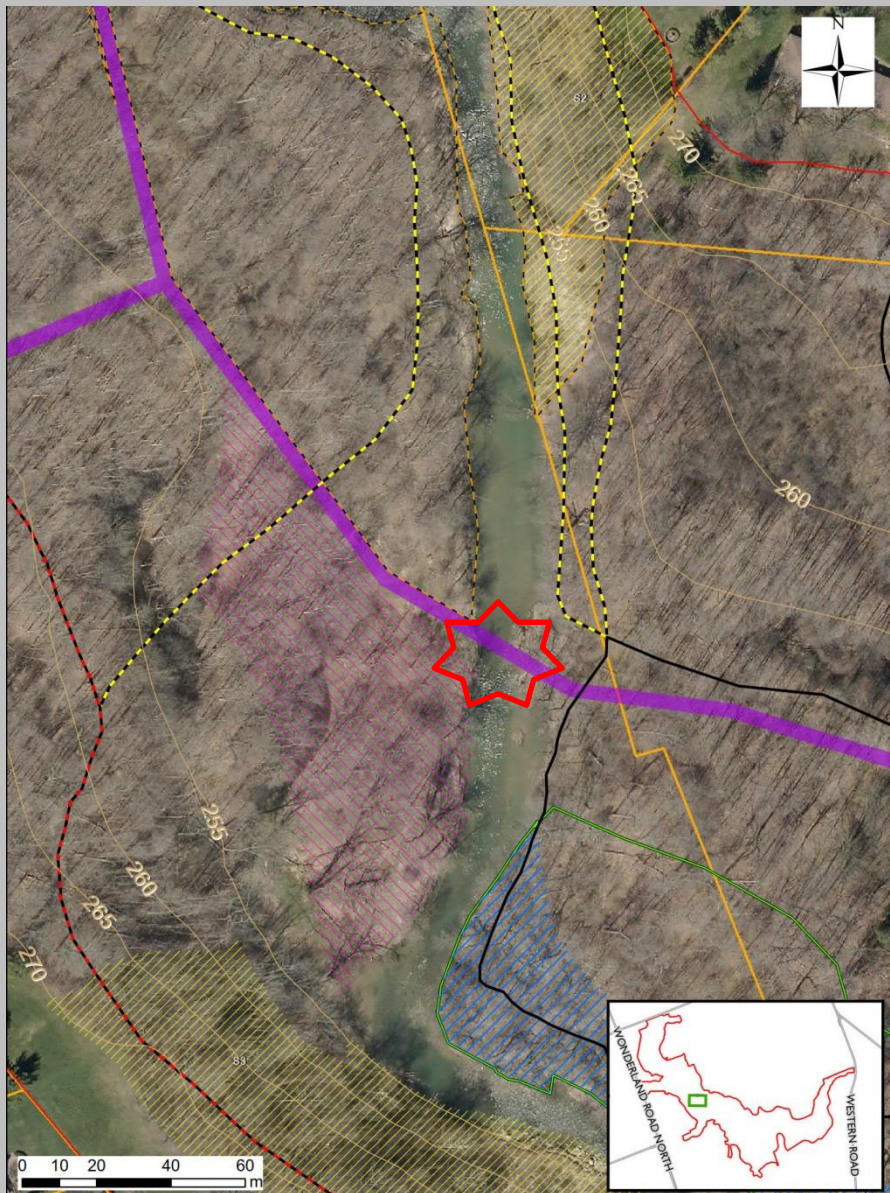
- Closed Trail
- Managed Trail
- - - Informal Trail
- Contour (5 metre Elevation)
- False Rue Anemone

## Habitat for Species of Conservation Concern

- /// Habitat for Rare Species (Striped Cream Violet)
- /// Habitat for Rare Species (American Gromwell)
- Utility Overlay (4 m)
- MVHF ESA Boundary (Not Approved By Council)



# Potential Crossing C



## Considerations

- Would require passing through SAR/SCC habitat
- Would require new trail on west side and/or conversion of informal to managed trail
- Would not comply with Guidelines as would directly impact Species at Risk with bridge location along any point of west creek bank.

## Trails

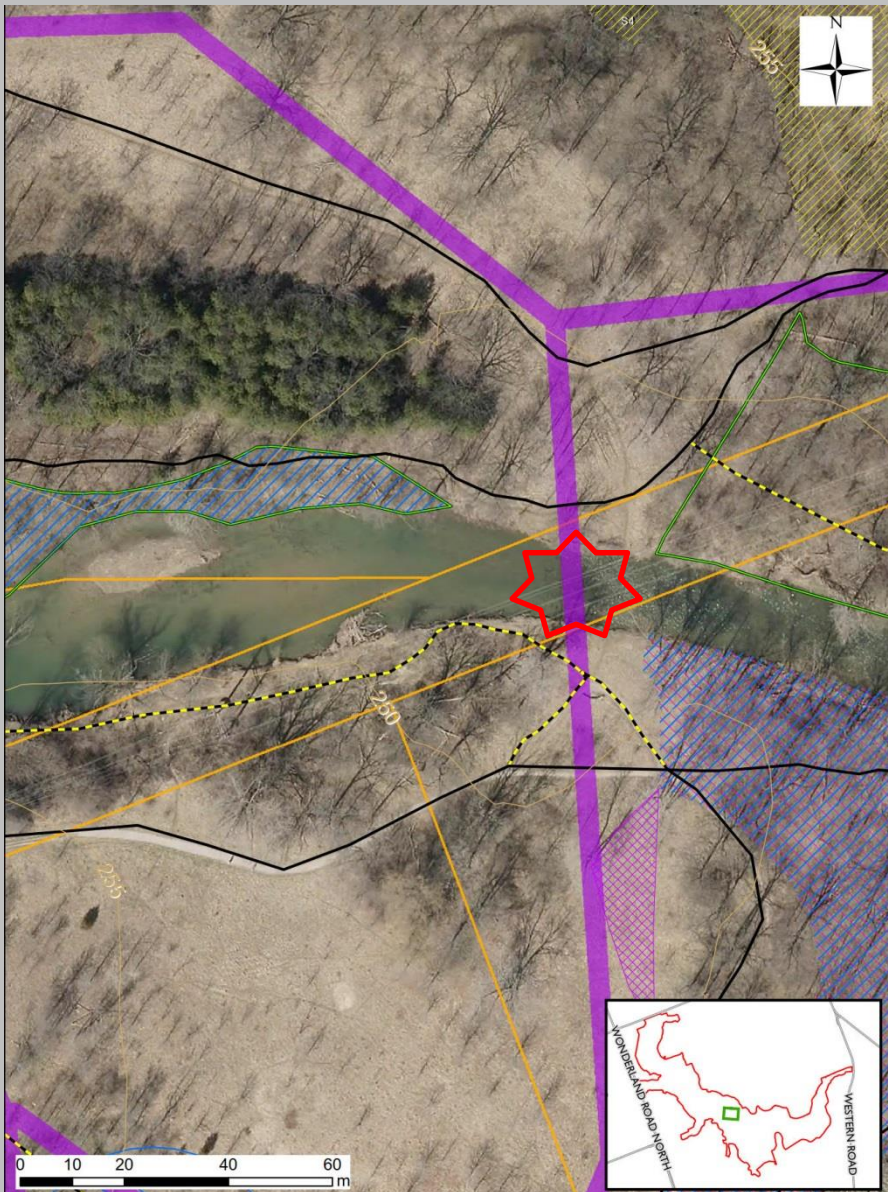
- Closed Trail
- Managed Trail
- - - Informal Trail
- Contour (5 metre Elevation)
- False Rue Anemone

## Habitat for Species of Conservation Concern

- Seeps and Springs Area (S1-S7)
- Habitat for Rare Species (Striped Cream Violet)
- Habitat for Rare Species (American Gromwell)
- Habitat for Special Concern Species (Green Dragon)
- Utility Overlay (4 m)
- MVHF ESA Boundary (Not Approved By Council)



# Potential Crossing D



## Considerations

- Would connect two existing managed trails
- Outside of mapped Significant Ecological Features
- Complies with Guidelines

## Trails

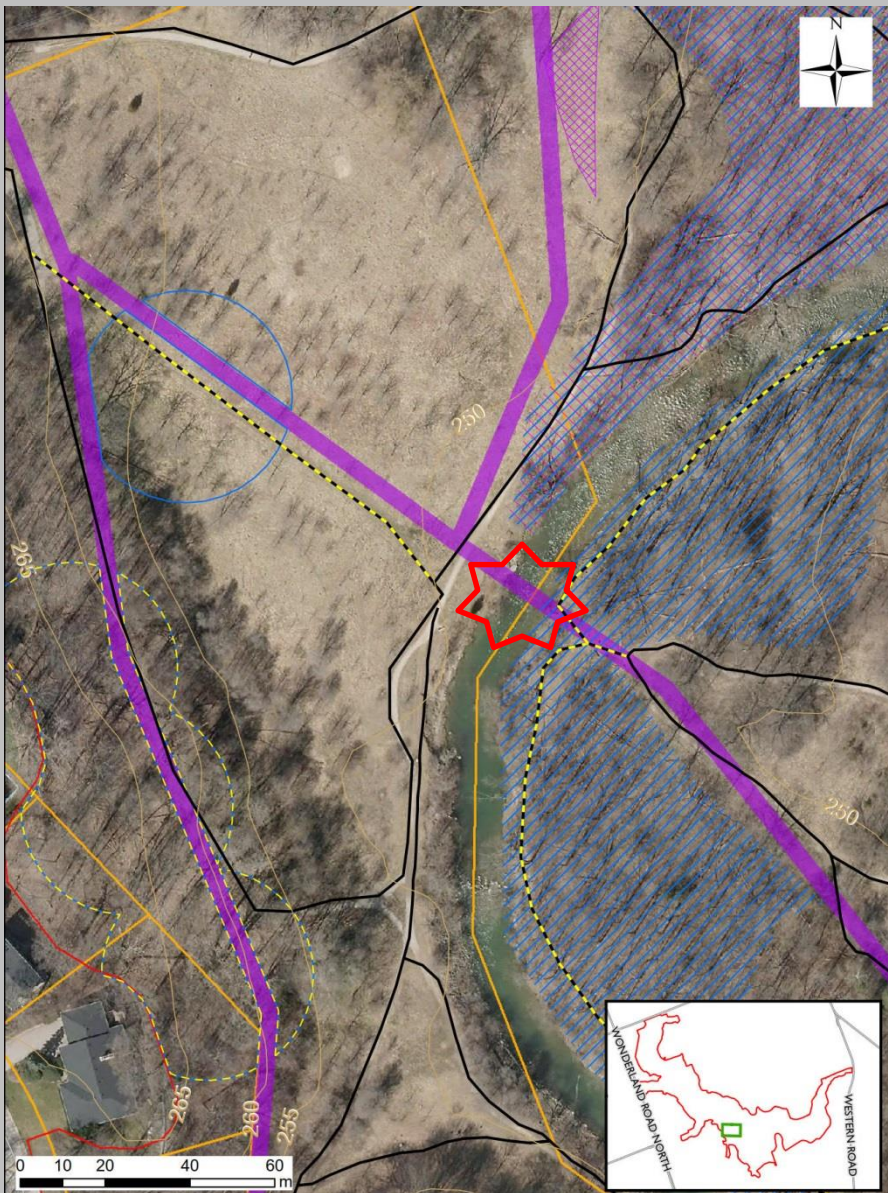
- Closed Trail
- Managed Trail
- Informal Trail
- Contour (5 metre Elevation)
- Kentucky Coffee-tree

## Habitat for Species of Conservation Concern

- Habitat for Rare Species (Slender Satin Grass)
- Seeps and Springs Area (S1-S7)
- Habitat for Rare Species (Striped Cream Violet)
- Habitat for Rare Species (American Gromwell)
- Habitat for Special Concern Species (Green Dragon)
- Utility Overlay (4 m)
- MVHF ESA Boundary (Not Approved By Council)



# Potential Crossing E



## Considerations

- Would connect two existing managed trails
- Would require passing through known SCC habitat
- Would not comply with Guidelines as would directly impact Species of Conservation Concern with bridge location along any point of east creek bank.

## Trails

- Closed Trail
- Managed Trail
- - - Informal Trail
- Contour (5 metre Elevation)
- Butternut
- Kentucky Coffee-tree

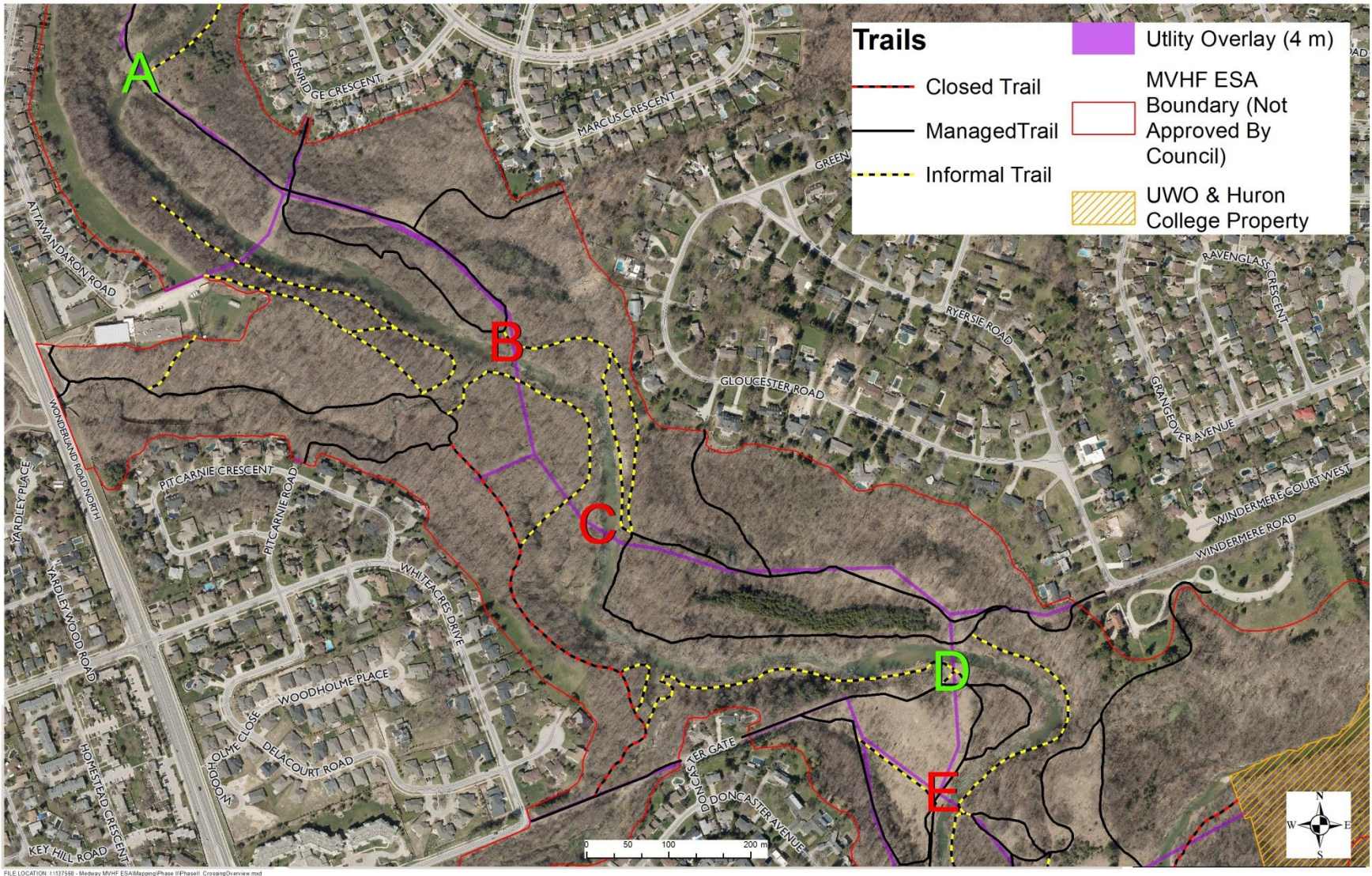
## Habitat for Species of Conservation Concern

- Habitat for Rare Species (Slender Satin Grass)
- Habitat for Rare Species (Striped Cream Violet)
- Habitat for Rare Species (American Gromwell)
- Utility Overlay (4 m)
- MVHF ESA Boundary (Not Approved By Council)



# Discussion

Are there other considerations we should be aware of for Crossings A & D?





# NEXT STEPS

- Draft of CMP circulated mid-August to LAC, EEPAC and ACCAC for comment
- Next LAC Meeting **September 7, 2017** (same time and location – light supper avail. from 5:15 p.m.)
- Purpose of LAC #4 is to present draft CMP

