



# City of London Planning Services

## COMMUNITY MEETING

### WHAT

A community meeting has been scheduled to discuss the vision and goals for London's near-campus neighbourhoods. The City is reviewing the Great Near-Campus Neighbourhoods Strategy, which was approved in 2008, and is seeking public input. This meeting will include a presentation about the strategy followed by an opportunity to discuss your ideas with City staff and other community stakeholders. The purpose of this review of the Great Near-Campus Neighbourhoods Strategy is to evaluate successes and challenges of the strategy since it was adopted in 2008, and identify next steps and actions to effectively implement the strategy.

### WHERE

**St. Peter's Basilica Cathedral Auditorium**  
506 Richmond Street  
(The building is located north of church building, and parking is available off of Clarence Street)

### WHEN

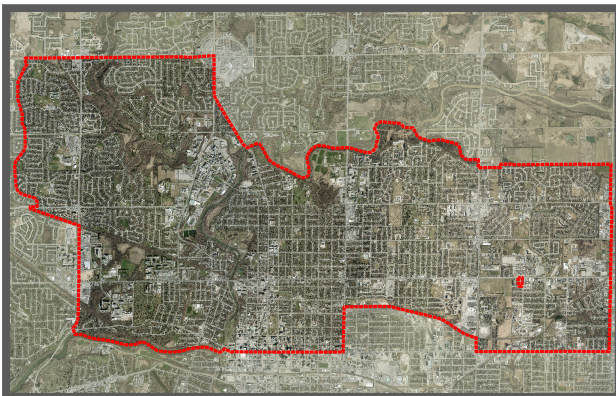
**November 19, 2015; 7:00 pm to 9:00 pm**

### WHO

Your opinion is needed. Please consider participating in this opportunity to shape the future of London's near-campus neighbourhoods.

### HOW TO GIVE COMMENTS

Please e-mail, mail, call in or fax your comments to the City of London Planning Services, P.O. Box 5035, London, ON N6A 4L9, Attn: Justin Adema  
Tel: 519-661-2500 ext. 4649 | E-mail: [jadema@london.ca](mailto:jadema@london.ca)



**PLEASE NOTE:** this is a non-statutory community meeting, which the City's Planning Department convenes when, in the opinion of the Managing Director, Planning and City Planner, the community should have a further opportunity to obtain information regarding a planning application. A public participation meeting will be held at the Planning and Environment Committee prior to the adoption of this strategy, which will give you an opportunity to comment to City Council on the Great Near-Campus Neighbourhoods Strategy.